

## Lockshield Radiator Valve Angle Pattern for copper or iron

### GENERAL INFORMATION

Size	Pattern No.	Box Qty	Code	Barcode	Price (£) ex VAT
15mm / 1/2x1/2	97 LS	1	680002	5013866017902	£18.01
22mm / 3/4x3/4	97 LS	1	680005	5013866017933	£24.51
15mm / 1/2x1/2	97 CPLS	1	680008	5013866017964	£24.98
22mm / 3/4x3/4	97 CPLS	1	680011	5013866017995	£32.67
15mm / 1/2x1/2	97 CPLS IC	10	680019	5013866044359	POA

### DIMENSIONS (mm)

Code	Description	A	B	C
680002	1/2-15MM 97LS BELMONT ANGLE RAD VALVE	53	63	35
680005	3/4-22MM 97LS BELMONT ANGLE RAD VALVE	61	64	41
680008	1/2-15MM 97LS CP BELMONT ANGLE RAD VALVE	53	63	35
680011	3/4-22MM 97LS CP BELMONT ANGLE RAD VALVE	61	64	41

### PRESSURE & TEMPERATURE

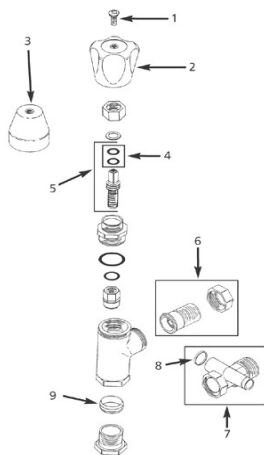
97 LS Angle Pattern	Minimum Operating Pressure (bar)	Maximum Cold Working Pressure (bar)	Maximum Hot Working Pressure (bar)
1/2-15MM 97LS BELMONT ANGLE RAD VALVE	No Minimum Operating Pressure	10.0 bar at temperatures up to 120oC	Not Suitable for Maximum Hot Working Pressure

### MATERIAL SPECIFICATIONS

Number	Component	Material
1	Body	Forged Brass (LS) Forged Brass Chrome Plated (CPLS)
2	Head	Brass Bar
3	Spindle/Valve	Brass Bar
4	Glandnut/Gland	Brass Bar
5	Adapter	Forged Brass (LS) Forged Brass Chrome Plated (CPLS)
6	Capnut	Forged Brass (LS) Forged Brass Chrome Plated (CPLS)
7	Cone	Brass
8	Set Screw	Brass
9	Lockshield	Polypropylene

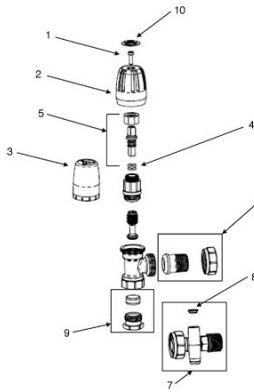
### SPARES

#### 97 LS - Size - 15mm / 1/2x1/2



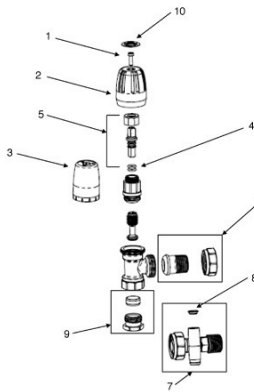
Spare Key	Description	Code	Barcode	Date From	Date To	Price (£) ex VAT
1	S4 BRASS SCREW	840110	5013866058899	April 01 1994	December 31 2007	£0.68
1	S20 SCREW (B4)	854435	5013866082474	January 01 2008	December 31 2007To Current	£0.62
2	WH9 WHEELHANDLE	843001	5013866034022	April 01 1994	December 31 2007	£3.49
2	WH17 WHEELHANDLE (B4)	854436	5013866082481	January 01 2008	December 31 2007To Current	£3.20
3	LS22 LOCKSHIELD	843002	5013866034039	April 01 1994	December 31 2007	£3.49
3	LS34 LOCKSHIELD (B4)	854437	5013866082498	January 01 2008	December 31 2007To Current	£3.20
4	OR3 O RING (RED) DISCONTINUED	840002	5013866033940	April 01 1994	December 31 2007	£1.95
4	OR34 O RING (B4)	854438	5013866082504	January 01 2008	December 31 2007To Current	£1.79
5	SOR4 SPINDLE & O RING SET	840113	5013866058929	April 01 1994	December 31 2007	£6.12
5	SOR7 SPINDLE & O RING SET (B4)	854439	5013866082511	January 01 2008	December 31 2007To Current	£5.61
6	TP15 BRASS TAIL PIPE (B4)	854459	5013866083983	January 01 2008	December 31 2007To CurrentTo Current	£7.87
6	TP3 BRASS TAIL PIPE	843005	5013866059155	April 01 1994	December 31 2007	£8.26
7	TP6 BRASS TAIL PIPE	840116	5013866058943	All variations		£10.27
8	DC5 DUST CAP	841102	5013866059063	All variations		£2.31
9	NC7 NIPPLE & CONE (BRASS B4)	854460	5013866083990	January 01 2008	December 31 2007To Current	£2.13
9	NC1 NIPPLE & CONE (BRASS)	843011	5013866059216	Product Introduction	December 31 2007	£2.24

10	IN17 INDICE (BRAND PLATE B4)	854441	5013866082535	All variations	£1.32
----	------------------------------	--------	---------------	----------------	-------



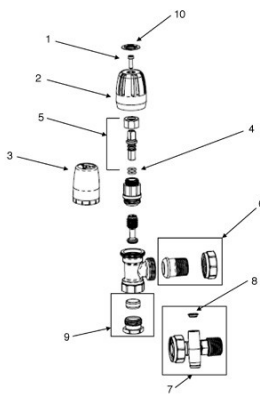
**97 LS - Size - 22mm / 3/4x3/4**

Spare Key	Description	Code	Barcode	Date From	Date To	Price (£) ex VAT
1	S20 SCREW (B4)	854435	5013866082474	January 01 2008	To Current	£0.62
1	S4 BRASS SCREW	840110	5013866058899	April 01 1994	December 31 2007	£0.68
2	WH17 WHEELHANDLE (B4)	854436	5013866082481	January 01 2008	December 31 2007To Current	£3.20
2	WH9 WHEELHANDLE	843001	5013866034022	April 01 1994	December 31 2007	£3.49
3	LS22 LOCKSHIELD	843002	5013866034039	April 01 1994	December 31 2007	£3.49
3	LS34 LOCKSHIELD (B4)	854437	5013866082498	January 01 2008	December 31 2007To Current	£3.20
4	OR34 O RING (B4)	854438	5013866082504	January 01 2008	December 31 2007To CurrentTo Current	£1.79
4	OR3 O RING (RED) DISCONTINUED	840002	5013866033940	April 01 1994	December 31 2007	£1.95
5	SOR7 SPINDLE & O RING SET (B4)	854439	5013866082511	January 01 2008	December 31 2007To Current	£5.61
5	SOR4 SPINDLE & O RING SET	840113	5013866058929	April 01 1994	December 31 2007	£6.12
6	TP4 BRASS TAIL PIPE	843006	5013866059162	April 01 1994	December 31 2007	£11.19
6	TP16 BRASS TAIL PIPE (B4)	854461	5013866084003	January 01 2008	December 31 2007To Current	£10.66
7	TP7 BRASS TAIL PIPE	840117	5013866058950	All variations		£13.98
8	DC5 DUST CAP	841102	5013866059063	All variations		£2.31
9	NC2 NIPPLE & CONE (BRASS)	843012	5013866059223	All variations		£3.69
9	22MM BSC103 BELMONT SHORT CONE	843016	5013866059261	April 01 1994	December 31 2007To CurrentTo Current	£1.02
9	NC8 NIPPLE & CONE (BRASS B4)	854462	5013866084010	All variations		£3.52
10	IN17 INDICE (BRAND PLATE B4)	854441	5013866082535	All variations		£1.32



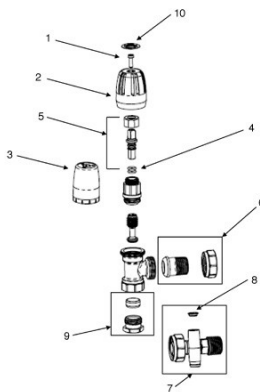
**97 CPLS - Size - 15mm / 1/2x1/2**

Spare Key	Description	Code	Barcode	Date From	Date To	Price (£) ex VAT
1	S20 SCREW (B4)	854435	5013866082474	January 01 2008	To Current	£0.62
1	S4CP CHROME SCREW	840109	5013866058882	April 01 1994	December 31 2007	£0.78
2	WH9 WHEELHANDLE	843001	5013866034022	April 01 1994	December 31 2007	£3.49
2	WH17 WHEELHANDLE (B4)	854436	5013866082481	January 01 2008	December 31 2007To Current	£3.20
3	LS22 LOCKSHIELD	843002	5013866034039	April 01 1994	December 31 2007	£3.49
3	LS34 LOCKSHIELD (B4)	854437	5013866082498	January 01 2008	December 31 2007To Current	£3.20
4	OR3 O RING (RED) DISCONTINUED	840002	5013866033940	April 01 1994	December 31 2007	£1.95
4	OR34 O RING (B4)	854438	5013866082504	January 01 2008	December 31 2007To Current	£1.79
5	SOR4 SPINDLE & O RING SET	840113	5013866058929	April 01 1994	December 31 2007	£6.12
5	SOR7 SPINDLE & O RING SET (B4)	854439	5013866082511	January 01 2008	December 31 2007To Current	£5.61
6	TP3CP CHROME TAIL PIPE DISCONTINUED	843008	5013866059186	April 01 1994	December 31 2007	£9.85
6	TP12CP 1/2 CHROME TAIL PIPE (B4)	854430	5013866082429	January 01 2008	December 31 2007To Current	£9.01
7	TP14 DO TAIL PIPE (B4)	854440	5013866082528	All variations		£9.42
8	DC5 DUST CAP	841102	5013866059063	All variations		£2.31
9	NC1CP NIPPLE & CONE (CHROME)	843013	5013866059230	April 01 1994	December 31 2007	£2.91
9	NC5 1/2 NIPPLE & CONE (B4)	854432	5013866082443	January 01 2008	December 31 2007To Current	£2.66
10	IN17 INDICE (BRAND PLATE B4)	854441	5013866082535	All variations		£1.32



**97 CPLS - Size - 22mm / 3/4x3/4**

Spare Key	Description	Code	Barcode	Date From	Date To	Price (£) ex VAT
1	S20 SCREW (B4)	854435	5013866082474	January 01 2008	To Current	£0.62
1	S4CP CHROME SCREW	840109	5013866058882	April 01 1994	December 31 2007	£0.78
2	WH17 WHEELHANDLE (B4)	854436	5013866082481	January 01 2008	December 31 2007To Current	£3.20
2	WH9 WHEELHANDLE	843001	5013866034022	April 01 1994	December 31 2007	£3.49
3	LS34 LOCKSHIELD (B4)	854437	5013866082498	January 01 2008	December 31 2007To Current	£3.20
3	LS22 LOCKSHIELD	843002	5013866034039	April 01 1994	December 31 2007	£3.49
4	OR3 O RING (RED) DISCONTINUED	840002	5013866033940	April 01 1994	December 31 2007	£1.95
4	OR34 O RING (B4)	854438	5013866082504	January 01 2008	December 31 2007To Current	£1.79
5	SOR7 SPINDLE & O RING SET (B4)	854439	5013866082511	January 01 2008	December 31 2007To CurrentTo Current	£5.61
5	SOR4 SPINDLE & O RING SET	840113	5013866058929	April 01 1994	December 31 2007	£6.12
6	TP4CP CHROME TAIL PIPE	843009	5013866059193	April 01 1994	December 31 2007	£13.31
6	TP13CP 3/4 CHROME TAIL PIPE (B4)	854431	5013866082436	January 01 2008	December 31 2007To Current	£9.01
7	TP7CP CHROME TAIL PIPE	840119	5013866058967	All variations		£16.51
8	DC5 DUST CAP	841102	5013866059063	All variations		£2.31
9	NC6 3/4 NIPPLE & CONE (B4)	854433	5013866082450	All variations		£2.66
9	NC2CP NIPPLE & CONE (CHROME)	843014	5013866059247	All variations		£4.69
9	22MM BSC103 BELMONT SHORT CONE	843016	5013866059261	April 01 1994	December 31 2007To CurrentTo Current	£1.02
10	IN17 INDICE (BRAND PLATE B4)	854441	5013866082535	All variations		£1.32



**97 CPLS IC - Size - 15mm / 1/2x1/2**

Spare Key	Description	Code	Barcode	Date From	Date To	Price (£) ex VAT
1	S20 SCREW (B4)	854435	5013866082474	January 01 2008	To Current	£0.62
1	S4CP CHROME SCREW	840109	5013866058882	April 01 1994	December 31 2007	£0.78
2	WH9 WHEELHANDLE	843001	5013866034022	April 01 1994	December 31 2007	£3.49
2	WH17 WHEELHANDLE (B4)	854436	5013866082481	January 01 2008	December 31 2007To Current	£3.20
3	LS22 LOCKSHIELD	843002	5013866034039	April 01 1994	December 31 2007	£3.49
3	LS34 LOCKSHIELD (B4)	854437	5013866082498	January 01 2008	December 31 2007To Current	£3.20
4	OR34 O RING (B4)	854438	5013866082504	January 01 2008	December 31 2007To CurrentTo Current	£1.79
4	OR3 O RING (RED) DISCONTINUED	840002	5013866033940	April 01 1994	December 31 2007	£1.95
5	SOR4 SPINDLE & O RING SET	840113	5013866058929	April 01 1994	December 31 2007	£6.12
5	SOR7 SPINDLE & O RING SET (B4)	854439	5013866082511	January 01 2008	December 31 2007To Current	£5.61
6	TP12CP 1/2 CHROME TAIL PIPE (B4)	854430	5013866082429	January 01 2008	December 31 2007To CurrentTo Current	£9.01
6	TP3CP CHROME TAIL PIPE DISCONTINUED	843008	5013866059186	April 01 1994	December 31 2007	£9.85
7	TP14 DO TAIL PIPE (B4)	854440	5013866082528	All variations		£9.42
8	DC5 DUST CAP	841102	5013866059063	All variations		£2.31
9	NC5 1/2 NIPPLE & CONE (B4)	854432	5013866082443	January 01 2008	December 31 2007To Current	£2.66
9	NC1CP NIPPLE & CONE (CHROME)	843013	5013866059230	April 01 1994	December 31 2007	£2.91
10	IN17 INDICE (BRAND PLATE B4)	854441	5013866082535	All variations		£1.32

**CARE & MAINTENANCE**

**Care**

No regular aesthetic care is required for this product

**Maintenance**

No regular maintenance is required for this product.

## REGULATIONS

### Regulations

Terrier manual radiator valves are generally approved to BS2767-10. For valves with compression connections, the connections are approved to BS EN1254-2; threaded connections comply with BS 21 or BS 2779.

They are designed for use only in an indirect open-vented or sealed water-filled central heating and/or indirect hot water system and for no other purpose.

They must be used within the pressure and temperature limits stated in the technical information table below.

Operating Conditions	Maximum
System Water Temperature (at 5bar)	120 °C
Operating pressure (at 65 °C)	10 bar

Under no circumstances must they be used in systems containing liquids or solutions other than water. The only exception is the addition of a proprietary central heating corrosion inhibitor, cleaner or anti-freeze to the system water in accordance with the manufacturer's instructions.

Terrier heating controls are manufactured to a strict quality assurance system in accordance with ISO 9000: 2001

## GUARANTEE

### Thermostatic and Manual Radiator Valves

#### Pegler Yorkshire Customcare 5 Year Guarantee - Terms & Conditions

Products are subject to a 5 year guarantee that is between Pegler Yorkshire and the final purchaser of the product.

The guarantee is subject to proof of purchase being supplied.

This guarantee does not affect any statutory rights the consumer may have in law.

The guarantee covers manufacturing or material defects and is not applicable where the product is fitted contrary to conditions of use in our literature.

The guarantee is subject to the following limitations:

1. The valves are designed for use only in an indirect open-vented or sealed water-filled central heating and/or indirect hot water system and for no other purpose.
2. They must be used within the pressure and temperature limits stated in the technical information table below.

Operating Conditions (Maximum)  
System Water Temperature (at 5bar) : 120 °C  
Operating pressure (at 65 °C) :10 bar

3. Under no circumstances must they be used to in systems containing liquids or solutions other than water. The only exception is the addition of a proprietary central heating corrosion inhibitor, cleaner or anti-freeze to the system water in accordance with the manufacturer's instructions.

4. Damage caused by abusive behaviour and accidental damage to the product are not covered by this guarantee

The extent of Pegler Yorkshire liability is limited to the cost of the replacement of the defective item and not to fitting or consequential damages.

## APPROVALS



Kitemarked BS 2767